

MiLi®

# MiLock TSA ACCEPTED

SMART ANTI-LOSS LUGGAGE LOCK



Works with  
**Apple Find My**

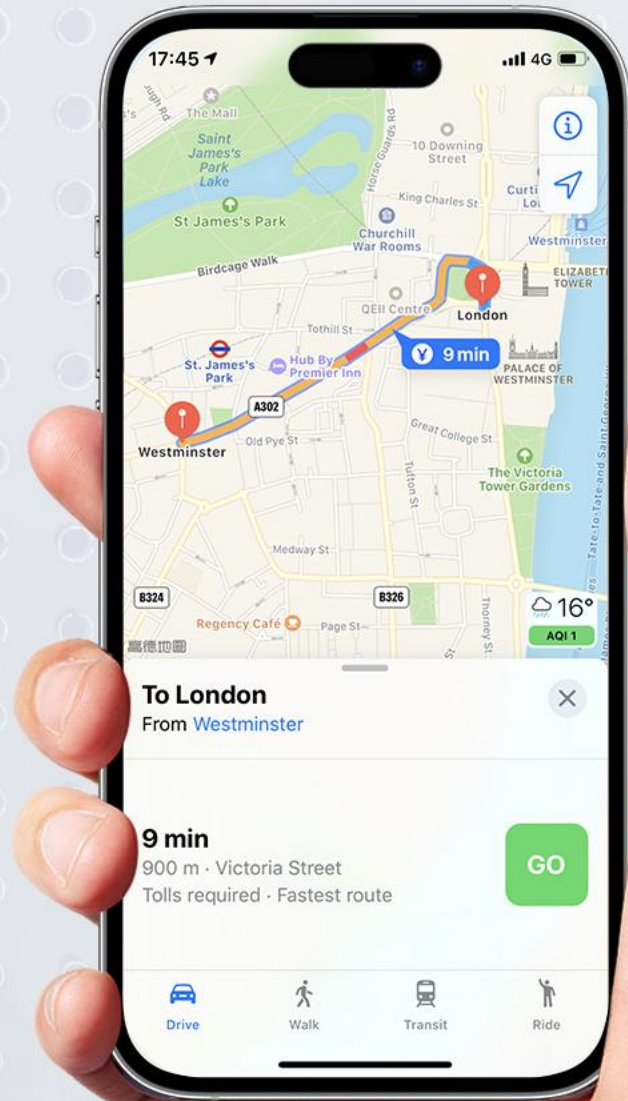
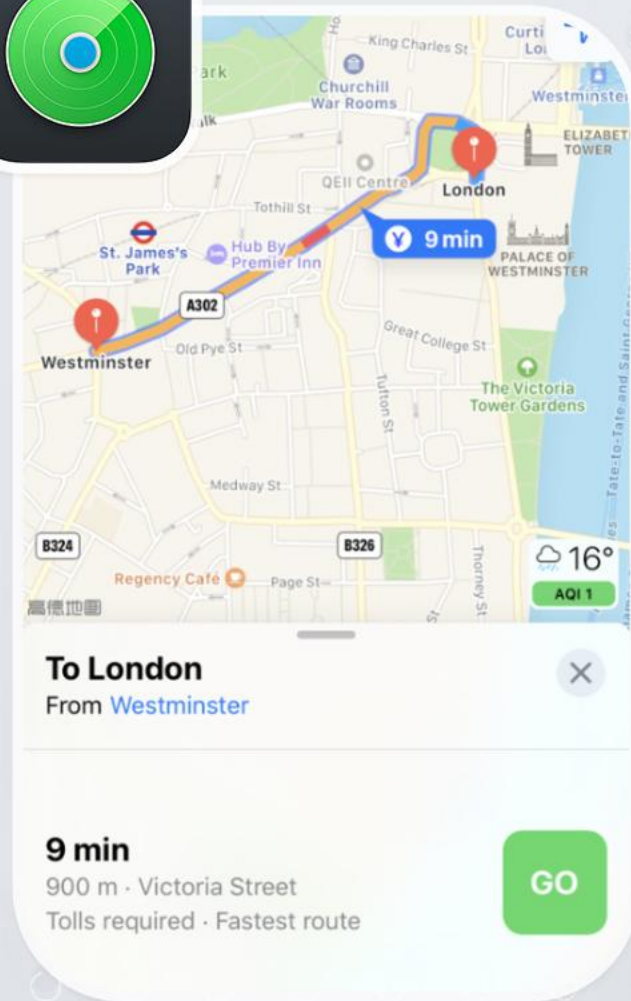
**TRAVEL  
SENTRY** 

# Works with Apple Find My

Locate it on a map in the  
Apple Find My network



Works with  
**Apple Find My**







**"Luggage bag" left behind**

20m ago

This item is no longer detected near you. It was last seen near Airport \*\*\*\*



# SAFE INSPECTION NO DAMAGE

Use the TSA-certified MiLock,  
and enjoy your trip with peace  
of mind.



100% TSA ACCEPTED



# **I**P65 Waterproof

Maximum depth of  
1 meter up to 30 minutes



# Replaceable CR2032 Button Battery

Lasts for use  
6-8 months





# MiLock Application

This lock fits most zippers, duffle bags, purses, computer bags, backpacks, suitcases, and briefcases.

LUGGAGE  
LOCK



BACKPACK  
LOCK



COMPUTER  
BAG LOCK



TOOLBOX  
LOCK





# MiLi<sup>®</sup>



## MiLock- The World First Apple Licensed Anti-Loss Luggage Lock



Works with

**Apple Find My**





# Find it Far Away

No matter where it is, you can always pinpoint and find it.





# Left-behind Remind

Distance from Bluetooth 50-100 meters, it will take about 5-20 min (a pop-up window will remind you that you have left something behind)



Luggage bag" left behind 20m ago

This item is no longer detected near you. It was last seen near Airport \*\*\*\*

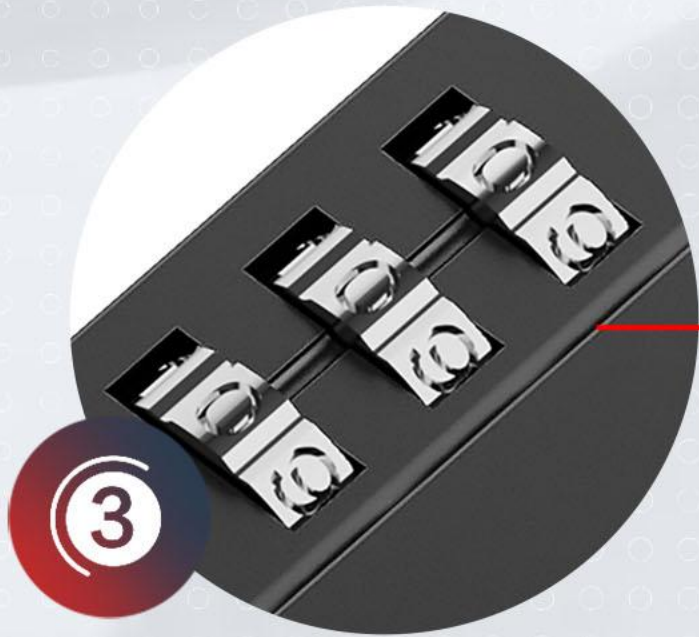




# Strong and Durable ZAC Materials

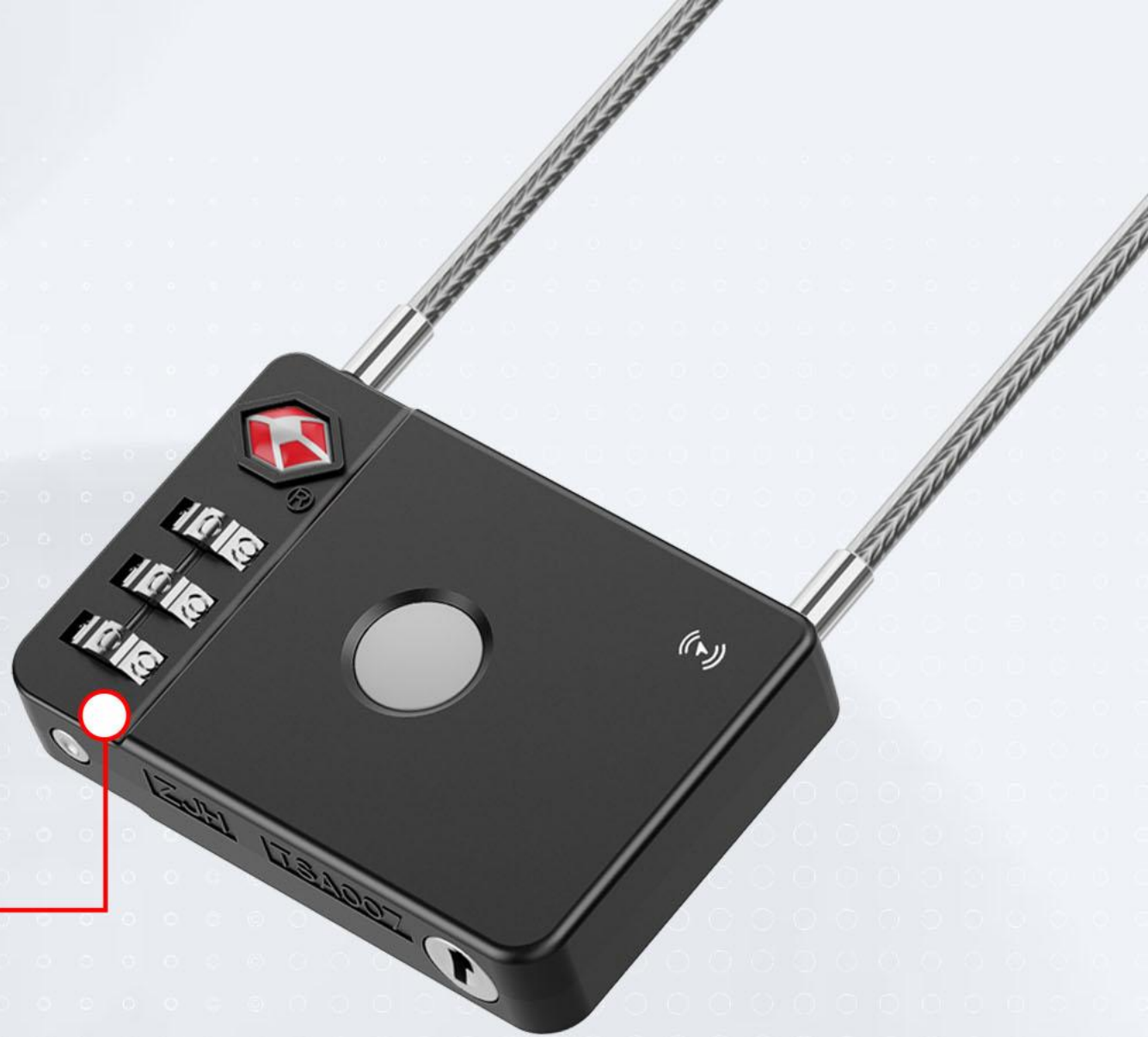


# 3-Digit Dials





# IP65 Waterproof



# Replaceable CR2032 Battery





# Protect Your Various Luggage for You

**LUGGAGE**



Prevent from  
being stolen

**BACKPACK**



**TOOLBOX**



Prevent it from  
being lost



## Settings



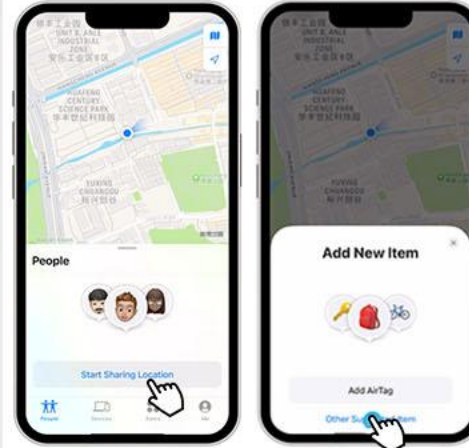
**B**efore beginning the connection, please read the following carefully: Ensure that your Apple ID is logged in and functioning correctly. You can find this in the 'Settings' at the top of your iOS device and log in to your Apple ID. Then proceed with the next steps.



**C**heck for updates. It is recommended to use the latest version of iOS, iPadOS, or macOS for the Apple Find My app to locate this item. On Apple Watch, use the latest version of watchOS.



**T**urn on "Find My" App and "Bluetooth"



**T**ap "Add Item" located at the Bottom on "Item" menu then select "Other Supported Item"



**P**ress the switch button once to power on your MiCord and once your MiCord is located, tap "Connect"